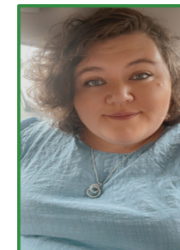


## Hello and Welcome to The Orchard

**About me as the Manager** - My name is Cassie Knagg and at The Orchard we provide long and medium residential care and accommodation for two young people of any gender with a range of conditions, most notably Autistic Spectrum Condition (ASC), Sensory Processing Difficulties, Learning Difficulties, with associated emotional difficulties and challenging behaviour. However, as every child is unique, we always assess children individually.



Working in the care sector for 10 years, I have managed a variety of services to include EBD and challenging behaviour and worked closely with regulation 44 Inspectors to ensure we are continually improving the service and reflecting upon our own practice.

From my experience, working alongside different professionals like social workers, health professionals and families, with the wider My3 staff team, we can support and meet the needs of the young person from a holistic approach. I am qualified with Level 3 in children and young people's workforce as well as Level 5 in leadership and management in residential childcare. Working with The Orchard team we utilise a range of professional skills, knowledge, experience and My3 training to effectively support the young people in our care. As a diverse and strong team, together, we cater for a spectrum of individual needs. Every person contributes to bringing new ideas and making the home feel a shared and family space

**At The Orchard** the ethos is to be more than just a 'residential setting.' We aim to be a 'home from home' for the children and young people living there: a place in which they can feel safe, secure, loved, and cared for. The home will always focus upon establishing a place of safety, building meaningful and lasting relationships and supporting young people to access the support they require to *live – learn - grow* and make sustainable progress. The home endeavours to achieve excellent outcomes for children and young people in all aspects of their care, from their starting points.

The Orchard is registered with Ofsted to provide residential care for children from the ages of 8 to 18, of any gender. It is a detached home, children and young people living here have their own large bedroom. With staff support, they are encouraged to personalise their rooms to provide them with a space they can call their own. The home also has several communal areas for children and young people, including a lounge, dining room, fully equipped kitchen, study area, games room, bathroom, and utility room. Set within a quiet lane, there is access to off road parking and a large garden area where children and staff can relax, enjoy a BBQ, play, and spend time outdoors .... Weather permitting of course.

We welcome visitors to the home to see what a bright, fun, and friendly team we have and to look at our beautiful home.

If you would like to discuss and explore placement opportunities, I would be delighted to work with you, along with the team at My3 services. Please contact [residentialreferrals@my3ltd.co.uk](mailto:residentialreferrals@my3ltd.co.uk), with any enquiries for placements or visit our website <https://www.my3ltd.co.uk>.

Or please contact me [cassie@my3ltd.co.uk](mailto:cassie@my3ltd.co.uk) Mob: 07946061776

Cassie.